



**ONLINE CLOSEOUT**

Online with DLMS  
DLMS.CA

*Peak Dot  Ranch Ltd.*

**December 23, 2024**

**353** Embryos  
**285** Straws of Semen

# Online Frozen Genetics Sale



*Let us Know if we can be of assistance.*



**Peak Dot Ranch Ltd.**

Carson Moneo  
306-266-4414

Clay Moneo  
306-266-4411

Email: [peakdot@gmail.com](mailto:peakdot@gmail.com) TEXT: 306-640-8760

*Elite Embryos and Semen Sale*

Race Horse Closeout Monday Dec. 23 at 7:00 pm C.S.T

**FARM GATE TIMED AUCTIONS**

**ONLINE CLOSEOUT**

Online with DLMS

**DLMS.CA**



# Online Frozen Genetics Sale

Race Horse Closeout DECEMBER 23 at 7:00 pm C.S.T

**FARM GATE TIMED AUCTIONS**

**December 23, 2024**



## SALE STAFF

Scott Bohrson.....Consultant (Bohrson Marketing Services) (403) 370-3010  
Rob Voice.....Consultant (Bohrson Marketing Services) (306) 270-6082  
Taylor Richards .....Consultant (Bohrson Marketing Services) (306) 821-4169



## SALE STAFF

Chris Poley.....(T bar C Cattle Co.) (306) 220-5006  
Ben Wright.....(T bar C Cattle Co.) 1-519-374-3335  
Shane Michelson.....(T bar C Cattle Co.) 1-403-363-9973  
Levi Rimke.....(T bar C Cattle Co.) 1-704-851-4515

**Leave an order. If your busy or tied up and can't get to your computer or feel more comfortable using us or our sale staff please feel to contact any of the Sale Staff above and they will represent you in a professional manner.**

**For assistance on registering and bidding contact Mark Shologan at 780-699-5082**

## Embryo Guarantees

Guaranteeing 90 day pregnancies if done by an accredited veterinarian  
3 embryos - 1 pregnancy





# Hi-Country

*Embryos*

Lots 1 - 66





## Lot 1

3 Embryos  
By HF Hi-Country 7L

## Lot 2

3 Embryos  
By HF Hi-Country 7L

## Lot 3

3 Embryos  
By HF Hi-Country 7L

## Lot 4

3 Embryos  
By HF Hi-Country 7L

## Lot 5

3 Embryos  
By HF Hi-Country 7L

## Lot 6

3 Embryos  
By HF Hi-Country 7L

## Lot 7

3 Embryos  
By HF Hi-Country 7L

## Lot 8

3 Embryos  
By HF Hi-Country 7L

## Lot 9

3 Embryos  
By HF Hi-Country 7L

## Lot 10

3 Embryos  
By HF Hi-Country 7L

## Lot 11

3 Embryos  
By HF Hi-Country 7L

## Lot 12

3 Embryos  
By HF Hi-Country 7L

## Lot 13

3 Embryos  
By HF Hi-Country 7L

ELLINGSON HI-RANGE  
HF HI-COUNTRY 7L  
HF TIBBIE 21J  
ELLINGSON PROFOUND 8155  
PEAK DOT BARBARA 807H  
PEAK DOT BARBARA 483A

BW	WW	YW	MILK	CW	MARB	REA	SC
1.5	80	130	27	60	0.65	0.70	321

# PEAK DOT BARBARA 807H



Peak Dot Barbara 807H is a model female from our program. Perfect udder, perfect feet, long level hip, wide based and very sound structured. Her dam Peak Dot Barbara 483A is a proven donor with 35 progeny. We have an extremely nice set of daughters at Peak Dot and her sons have been topping our bull sales. We think the world of this mating to Hi-Country and would expect to see sons with an abundance of muscle, body shape and depth of rib and daughters that are easy fleshing, deep ribbed with beautiful udders.

**Embryos stored at BoviGen - Moose Jaw SK**  
**Embryos are qualified for Canada & USA & Australia**



# PEAK DOT LADY 51E



**Lot 14**

3 Embryos  
By HF Hi-Country 7L

**Lot 15**

3 Embryos  
By HF Hi-Country 7L

**Lot 16**

3 Embryos  
By HF Hi-Country 7L



**HF Hi-Country 7L**  
Sire of Embryos

ELLINGSON HI-RANGE  
HF HI-COUNTRY 7L  
HF TIBBIE 21J  
PEAK DOT FOOTHILLS 1012B  
**PEAK DOT LADY 51E**  
PEAK DOT LADY 76B



BW	WW	YW	MILK	CW	MARB	REA	SC
0.4	79	134	30	64	0.31	1.00	291

Peak Dot Lady 51E is a model Angus female with a little extra look, loads of body depth and excellent production and fertility. She is one of two direct daughters of the Genex sire Peak Dot Foothills 1012B that we decided to flush this year. Peak Dot Lady 51E is an Elite/Premier Dam with the CAA and has an average weaning ratio of 109 on her last five calves. She is also the dam of the \$30,000 Peak Dot Four Leaf 157L purchased by Six Mile Ranch. She has a bull calf by Profound that will be a feature in the 2025 Peak Dot Spring Bull Sale. This planned mating to Hi-Country will be sure to result in some progeny with ideal body type and that striking look.

**Embryos stored at BoviGen - Moose Jaw SK**  
**Embryos are qualified for Canada & USA**



# PEAK DOT PRIDE 13F



## Lot 17

3 Embryos  
By HF Hi-Country 7L

## Lot 18

3 Embryos  
By HF Hi-Country 7L

## Lot 19

3 Embryos  
By HF Hi-Country 7L

## Lot 20

3 Embryos  
By HF Hi-Country 7L

## Lot 21

3 Embryos  
By HF Hi-Country 7L



**HF Hi-Country 7L**  
**Sire of Embryos**

ELLINGSON HI-RANGE  
HF HI-COUNTRY 7L  
HF TIBBIE 21J  
HOOVER NO DOUBT  
PEAK DOT PRIDE 13F  
PEAK DOT PRIDE 7D



BW	WW	YW	MILK	CW	MARB	REA	SC
0.9	79	141	26	69	0.68	1.06	314

A top ranking donor female from Peak Dot Ranch that recently sold for \$25,000 to Chapman Angus Oklahoma in the Autumn Angus Classic. Peak Dot Pride 13F is genetically and prototypically outstanding female with undeniable maternal presence, pedigree power and cow family strength all wrapped up in one package. She has been a very consistent fertile donor producing 18 embryos on her last two flushes. She is a herd favorite with her impeccable udder quality and model Angus body type. A third generation donor going back to the popular Peak Dot Pride 88B. An Elite/Premier Dam with a nursing ratio of 108 on her last seven calves. She is also the mother of Peak Dot Herdsires Peak Dot Lancaster and Peak Dot Seedstock 38F.

**Embryos stored at BoviGen - Moose Jaw SK**  
**Embryos are qualified for Canada & USA**



# PEAK DOT QUEEN 271F

## Lot 22

3 Embryos  
By HF Hi-Country 7L

## Lot 23

3 Embryos  
By HF Hi-Country 7L

## Lot 24

3 Embryos  
By HF Hi-Country 7L

## Lot 25

3 Embryos  
By HF Hi-Country 7L

## Lot 26

3 Embryos  
By HF Hi-Country 7L

## Lot 27

2 Embryos  
By HF Hi-Country 7L



**HF Hi-Country 7L**  
Sire of Embryos

ELLINGSON HI-RANGE  
HF HI-COUNTRY 7L  
HF TIBBIE 21J  
PEAK DOT INNOVATION 62D  
**PEAK DOT QUEEN 271F**  
QUEEN OF PEAK DOT 936Y



Peak Dot Queen 271F is a majestic stunner with style, elegance, neck extension and structural balance in a moderate easy fleshing package. She comes from a great line of females, her dam is a donor along with 49 progeny. Peak Dot Queen 271F has already raised two big time feature sons and has an outstanding Profound daughter in the 2024 replacement pen. She is definitely the front pasture kind and her mating to Hi-Country will produce progeny with a fashionable pedigree, curve bending EPD profile and eye catching style.

**Embryos stored at BoviGen - Moose Jaw SK**  
**Embryos are qualified for Canada & USA & Australia**

BW	WW	YW	MILK	CW	MARB	REA	SC
-0.3	59	104	33	50	0.42	0.85	283



# PEAK DOT LADY 218F

**Lot 28**

3 Embryos  
By HF Hi-Country 7L

**Lot 29**

3 Embryos  
By HF Hi-Country 7L

**Lot 30**

3 Embryos  
By HF Hi-Country 7L

**Lot 31**

3 Embryos  
By HF Hi-Country 7L



**HF Hi-Country 7L**  
Sire of Embryos

ELLINGSON HI-RANGE  
HF HI-COUNTRY 7L  
HF TIBBIE 21J  
HOOVER NO DOUBT  
**PEAK DOT LADY 218F**  
PEAK DOT LADY 475C



Peak Dot Lady 218F is a true beef cow that you want to duplicate and have a pasture full of as she is so maternal in her type with an attractive front end, nice head, huge barrel, level top, strong udder and good feet while being athletic and sound. She is the mother of the \$42,000 herdsire Peak Dot Mosaic 123J to Hillcrest Enterprises. We have two of her daughters in the herd and the plan is to add many more. She currently has a standout son sired by Trust that will headline the 2025 Spring Peak Dot Bull Sale.

**Embryos stored at BoviGen - Moose Jaw SK**  
**Embryos are qualified for Canada & USA**

BW	WW	YW	MILK	CW	MARB	REA	SC
1.6	77	135	25	65	0.56	0.95	300



# PEAK DOT BARBARA 67E

## Lot 32

3 Embryos  
By HF Hi-Country 7L

## Lot 33

3 Embryos  
By HF Hi-Country 7L

## Lot 34

3 Embryos  
By HF Hi-Country 7L

## Lot 35

3 Embryos  
By HF Hi-Country 7L



**HF Hi-Country 7L**  
**Sire of Embryos**

ELLINGSON HI-RANGE  
HF HI-COUNTRY 7L  
HF TIBBIE 21J  
VISION UNANIMOUS  
PEAK DOT LADY 67E  
BARBARA OF PEAK DOT 266W



Peak Dot Barbara 67E is a second generation donor that always has done a good job on her calves no matter who she is mated to. She is extremely good footed with plenty of body depth, fleshing ability and has a true authentic Angus look. The demand for Hi-Country is at an all-time high and this mating will result in progeny with tones of body, explosive muscle shape in a very sound structural package.

**Embryos stored at BoviGen - Moose Jaw SK**  
**Embryos are qualified for Canada & USA & Australia**

BW	WW	YW	MILK	CW	MARB	REA	SC
0.8	65	111	25	50	0.43	0.71	270



# PEAK DOT LADY 1017G



## Lot 36

3 Embryos  
By HF Hi-Country 7L

## Lot 37

3 Embryos  
By HF Hi-Country 7L

## Lot 38

3 Embryos  
By HF Hi-Country 7L

## Lot 39

2 Embryos  
By HF Hi-Country 7L



**HF Hi-Country 7L**  
**Sire of Embryos**

ELLINGSON HI-RANGE  
HF HI-COUNTRY 7L  
HF TIBBIE 21J  
ELLINGSON PROFOUND 8155  
**PEAK DOT LADY 1017G**  
LADY OF PEAK DOT 274Z



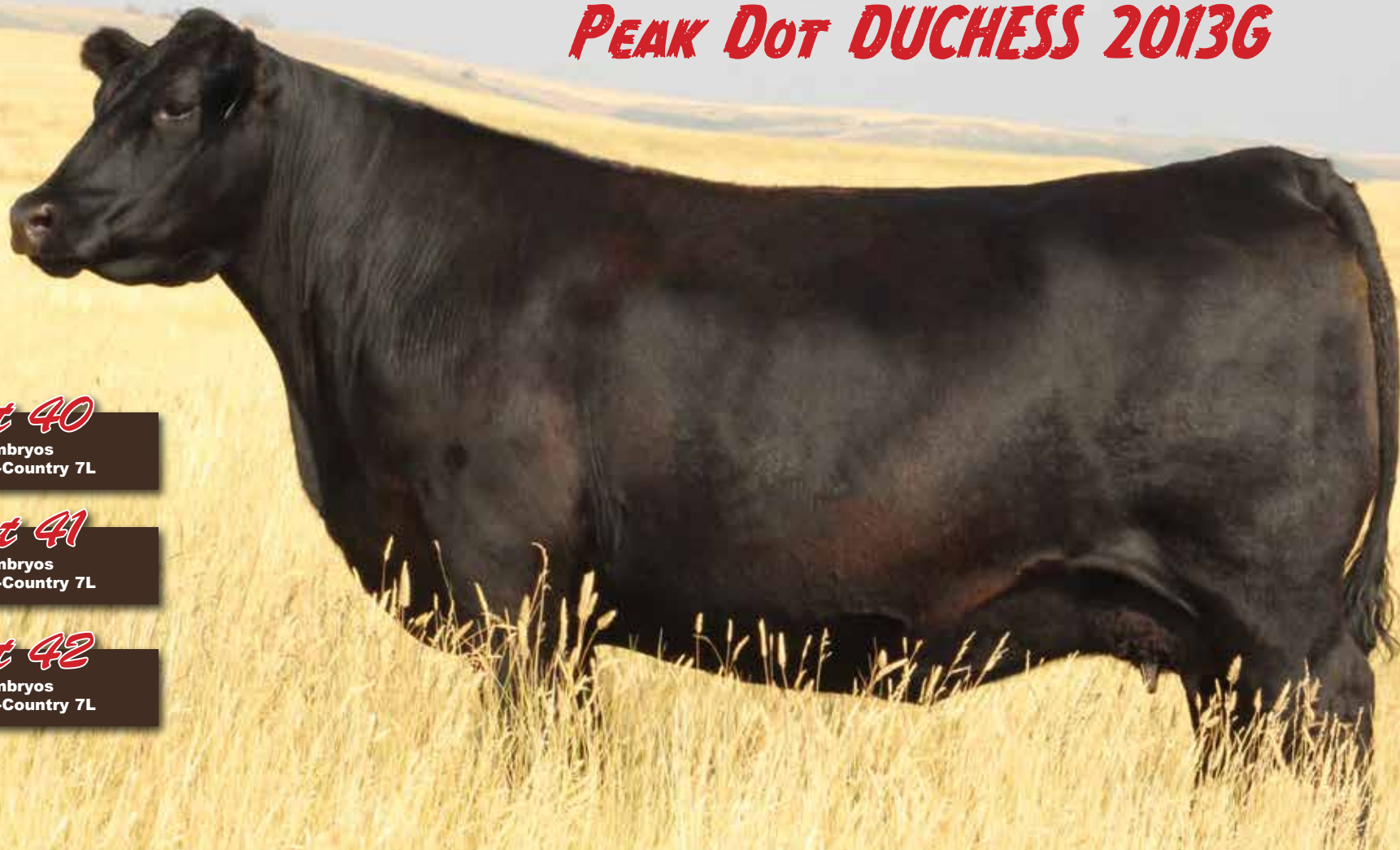
Peak Dot Lady 1017G is a real breeding piece with a captivating pedigree backed by generations of females with exquisite femininity, abundant milk and powerful phenotype. Her dam is the popular Lady of Peak Dot 274Z donor who has 14 progeny. We feel this mating with Hi-Country will produce progeny with phenotype and performance that will excel in any program.

**Embryos stored at BoviGen - Moose Jaw SK**  
**Embryos are qualified for Canada & USA & Australia**

BW	WW	YW	MILK	CW	MARB	REA	SC
0.8	75	130	26	57	0.50	0.80	323



# PEAK DOT DUCHESS 2013G



**Lot 40**

3 Embryos  
By HF Hi-Country 7L

**Lot 41**

3 Embryos  
By HF Hi-Country 7L

**Lot 42**

2 Embryos  
By HF Hi-Country 7L



**HF Hi-Country 7L**  
**Sire of Embryos**

ELLINGSON HI-RANGE  
**HF HI-COUNTRY 7L**  
HF TIBBIE 21J  
ELLINGSON ROUGHRIDER 4202  
**PEAK DOT DUCHESS 2013G**  
PEAK DOT DUCHESS 540A



There are many reasons we are so high on these Ellingson Roughrider daughters. Not only are they tremendously thick made, easy fleshing, fertile cows but they also have great feet and impeccable udder quality. Peak Dot Duchess 2013G is the ideal female on our ranch for just those reasons. We currently have three daughters from her retained in our herd. This should be a very predictable mating as Hi-Country has a very similar body type and exceptional foot quality.

**Embryos stored at BoviGen - Moose Jaw SK**  
**Embryos are qualified for Canada & USA & Australia**

BW	WW	YW	MILK	CW	MARB	REA	SC
0.8	71	125	25	58	0.37	0.83	310



# PEAK DOT PANSY 876G

## Lot 43

3 Embryos  
By HF Hi-Country 7L

## Lot 44

3 Embryos  
By HF Hi-Country 7L

## Lot 45

3 Embryos  
By HF Hi-Country 7L



**HF Hi-Country 7L**  
**Sire of Embryos**

ELLINGSON HI-RANGE  
HF HI-COUNTRY 7L  
HF TIBBIE 21J  
ELLINGSON RIDER PRIDE 7282  
**PEAK DOT PANSY 876G**  
PEAK DOT PANSY 68B



Peak Dot Pansy 876G is a top ranking donor with impressive phenotype and an excellent EPD profile. She is a second generation donor. Her dam is listed as Elite/Premier Dam with the CAA. We have three full sisters and several maternal sisters to Peak Dot Pansy 876G in the herd. They all have the same exceptional udders. She raised one of the very top Gable bulls in the 2024 Spring Bull Sale and has a big powerful Big River son that will be featured in our 2025 Spring Sale.

**Embryos stored at BoviGen - Moose Jaw SK**  
**Embryos are qualified for Canada & USA**

BW	WW	YW	MILK	CW	MARB	REA	SC
0.8	76	134	24	63	0.33	0.94	292



# PEAK DOT BAMBI 78G



**Lot 46**

3 Embryos  
By HF Hi-Country 7L

**Lot 47**

4 Embryos  
By HF Hi-Country 7L



**HF Hi-Country 7L**  
Sire of Embryos

ELLINGSON HI-RANGE  
HF HI-COUNTRY 7L  
HF TIBBIE 21J  
ELLINGSON ROUGHRIDER 4202  
**PEAK DOT BAMBI 78G**  
PEAK DOT BAMBI 16C



Peak Dot Bambi 78G is a second generation embryo donor from the highly fertile Bambi cow family. Her dam Peak Dot Bambi 16C is listed as an Elite/Premier dam with the Canadian Angus Association and has an average weaning ratio of 110 on her last six calves. She is the dam of Peak Dot Franchise 389F owned by Perrot Cattle Co. and Canadian Sires. Peak Dot Bambi 78G has just weaned off her 3rd consecutive outstanding calf and bred back early again, she is well on her way to making Elite Dam status herself. The Ellingson Roughrider daughters are highly sought after for their productive easy fleshing, deep sided type and ideal udder quality. Bambi 78G along with several of her maternal sisters have been retained in the Peak Dot herd as we continue to build and add to this highly productive maternally driven cow family. This planned mating to Hi-Country should result in some extremely stout progeny that are some of the freshest genetics from our program.

**Embryos stored at BoviGen - Moose Jaw SK**  
**Embryos are qualified for Canada & USA**

BW	WW	YW	MILK	CW	MARB	REA	SC
-0.6	62	111	30	50	0.48	0.72	291



# PEAK DOT LADY 2044H

**Lot 48**

3 Embryos  
By HF Hi-Country 7L

**Lot 49**

3 Embryos  
By HF Hi-Country 7L

**Lot 50**

3 Embryos  
By HF Hi-Country 7L

**Lot 51**

3 Embryos  
By HF Hi-Country 7L



**HF Hi-Country 7L**  
Sire of Embryos

ELLINGSON HI-RANGE  
HF HI-COUNTRY 7L  
HF TIBBIE 21J  
MUSGRAVE 316 COLOSSAL 137  
**PEAK DOT LADY 2044H**  
PEAK DOT LADY 2067D



Peak Dot Lady 2044H has been a favorite ever since she was a calf. She has grown into a long bodied, deep sided cow with a beautiful udder, massive hip and a great look. Her Big River bull calf was a feature in our 2023 Spring Bull Sale and we retained an excellent Brutus daughter out of her this year. The maternal side of this cow is stacked with generations of great females stemming back to Lady of Peak Dot 402U. A popular donor with 64 progeny. This is a great mating here and it will leave some highly productive females.

**Embryos stored at BoviGen - Moose Jaw SK**  
**Embryos are qualified for Canada & USA & Australia**

BW	WW	YW	MILK	CW	MARB	REA	SC
0.1	74	125	26	50	0.31	0.75	313



# PEAK DOT BARDOLIA 297H



**Lot 52**

3 Embryos  
By HF Hi-Country 7L

**Lot 53**

3 Embryos  
By HF Hi-Country 7L

**Lot 54**

3 Embryos  
By HF Hi-Country 7L

**Lot 55**

3 Embryos  
By HF Hi-Country 7L



**HF Hi-Country 7L**  
Sire of Embryos

ELLINGSON HI-RANGE  
HF HI-COUNTRY 7L  
HF TIBBIE 21J  
COLEMAN CHARLO 0256  
**PEAK DOT BARDOLIA 297H**  
PEAK DOT BARDOLIA 340E



If you like moderate framed problem free cattle take a look here. Peak Dot Bardolia 297H is the type and kind we strive to produce - balanced, thick, easy fleshing, perfect udder, excellent feet and loaded with a ton of style and maternal presence. She has cow family strength for generations. Her dam is backed by two consecutive generations of donor females. This mating to Hi-Country will result in some progeny that will provide a solid foundation to build a program around.

**Embryos stored at BoviGen - Moose Jaw SK**  
**Embryos are qualified for Canada & USA & Australia**

BW	WW	YW	MILK	CW	MARB	REA	SC
2.0	79	129	24	55	0.38	1.09	298



# PEAK DOT PANSY 14H

## Lot 56

3 Embryos  
By HF Hi-Country 7L

## Lot 57

3 Embryos  
By HF Hi-Country 7L

## Lot 58

3 Embryos  
By HF Hi-Country 7L

## Lot 59

3 Embryos  
By HF Hi-Country 7L



**HF Hi-Country 7L**  
**Sire of Embryos**

ELLINGSON HI-RANGE  
HF HI-COUNTRY 7L  
HF TIBBIE 21J  
MUSGRAVE 316 COLOSSAL 137  
**PEAK DOT PANSY 14H**  
PEAK DOT PANSY 1015A



Peak Dot Pansy 14H is a capacious, deep-bodied, easy fleshing Colossal daughter with eye catching style and an excellent udder. We currently have 177 direct Colossal daughters registered with Canadian Angus Association and 128 grand daughters. Colossal daughters are all stamped with beautiful easy fleshing body type, excellent udder quality, ideal foot structure and fertility. All real-world traits that affect production and profitability. Peak Dot Pansy 14H was chosen as one of the top Colossal daughters to try replicate over and over. We have retained her first two daughters and plan to add many more to the herd in the future through the embryo transfer program.

**Embryos stored at BoviGen - Moose Jaw SK**  
**Embryos are qualified for Canada & USA & Australia**

BW	WW	YW	MILK	CW	MARB	REA	SC
0.1	71	120	29	52	0.45	0.78	290



# PEAK DOT ERICA 40E



**Lot 60**

3 Embryos  
By HF Hi-Country 7L

**Lot 61**

3 Embryos  
By HF Hi-Country 7L



**HF Hi-Country 7L**  
Sire of Embryos

ELLINGSON HI-RANGE  
HF HI-COUNTRY 7L  
HF TIBBIE 21J  
VISION UNANIMOUS 1418  
**PEAK DOT ERICA 40E**  
ERICA OF PEAK DOT 468U



Peak Dot Erica 40E is a second generation donor and direct daughter from our all time high income producing cow on the ranch Erica of Peak Dot 478U. She currently has 54 progeny and is the dam or grandam of several noted sires such as Alta sires Peak Dot Prime and Peak Dot Country and top sellers Peak Dot Attractive 186F and Peak Dot Boost 137H. Peak Dot Erica 40E was chosen to continue on the Erica Legacy. She is a proven producer with great feet, an exceptional udder and that soft easy fleshing body type that we like to replicate over and over. Her mating to the popular Hi-Country should result in progeny that are easy to look at and even easier to sell!

**Embryos stored at BoviGen - Moose Jaw SK**  
**Embryos are qualified for Canada & USA**

BW	WW	YW	MILK	CW	MARB	REA	SC
1.6	73	129	24	55	0.41	0.77	259



# PEAK DOT HEATHER 284H

**Lot 62**

4 Embryos  
By HF Hi-Country 7L



**HF Hi-Country 7L**  
Sire of Embryos

ELLINGSON HI-RANGE  
**HF HI-COUNTRY 7L**  
HF TIBBIE 21J  
PEAK DOT SEEDSTOCK 38F  
**PEAK DOT HEATHER 248H**  
PEAK DOT HEATHER 32F

BW	WW	YW	MILK	CW	MARB	REA	SC
0.8	66	120	28	50	0.64	0.91	276



This stunning female is a daughter of Peak Dot Seedstock 38F and is truly a spectacular cow, sweet fronted, feminine, a flawless phenotype and a great udder with excellent teat placement. She has been a female that several visitors to the ranch have identified and picked out as a favorite and one we would certainly like to replicate over and over again. Her No Doubt dam has been making a impact here as well she is one of our top producing No Doubt daughters with a big massive hip and a great look. She currently has one of the most impressive bred heifers in the replacement pen sired by Peak Dot Belfast. This is an exciting mating and will leave some phenotypic standouts. **Embryos stored at BoviGen - Moose Jaw SK**  
**Embryos are qualified for Canada & USA**



# PEAK DOT JESSICA 426G



**Lot 63**

3 Embryos  
By HF Hi-Country 7L

**Lot 64**

3 Embryos  
By HF Hi-Country 7L

**Lot 65**

3 Embryos  
By HF Hi-Country 7L

**Lot 66**

3 Embryos  
By HF Hi-Country 7L



**HF Hi-Country 7L**  
Sire of Embryos

ELLINGSON HI-RANGE  
HF HI-COUNTRY 7L  
HF TIBBIE 21J  
MUSGRAVE 316 COLOSSAL 137  
**PEAK DOT JESSICA 426G**  
PEAK DOT JESSICA 23D



An opportunity to access genetics from one of our favorite cows on the ranch. Peak Dot Jessica 426G is a super powerful cow with a balanced genetic and visual package that excels in udder quality and milk production and maternal quality. She offers a proven pedigree resulting in progeny with bred in consistency and predictability. She has raised the kind that grow and gain and her mating to the popular Hi-Country will result in some high end progeny that will perform and excel in any program.

**Embryos stored at BoviGen - Moose Jaw SK**  
**Embryos are qualified for Canada & USA & Australia**

BW	WW	YW	MILK	CW	MARB	REA	SC
2.3	74	131	24	60	0.36	0.86	268



# Gable

*Embryos* Lots 67 - 86





# PEAK DOT BARBARA 807H

*Lot 67*

4 Embryos  
By Schiefelbein Gable 311



**Schiefelbein Gable 311**  
Sire of Embryos

SITZ RESILENT 10208  
**SCHIEFELBEIN GABLE 311**  
FROSTY ELBA LIZZY 5569  
ELLINGSON PROFOUND 8155  
**PEAK DOT BARBARA 807H**  
PEAK DOT BARBARA 483A



Peak Dot Barbara 807H is a model female from our program. Perfect udder, perfect feet, long level hip, wide based and very sound structured. Her dam Peak Dot Barbara 483A is a proven donor with 35 progeny. We have an extremely nice set of daughters at Peak Dot and her sons have been topping our bull sales. We think the world of this mating to Gable and would expect to see sons with an abundance of muscle, body shape and depth of rib and daughters that are easy fleshing, deep ribbed with beautiful udders.

**Embryos stored at BoviGen - Moose Jaw SK**  
**Embryos are qualified for Canada & USA & Australia**

BW	WW	YW	MILK	CW	MARB	REA	SC
2.2	86	141	23	57	0.78	0.47	365



# PEAK DOT PRIDE 13F



**Lot 68**

3 Embryos  
By Schiefelbein Gable 311

**Lot 69**

3 Embryos  
By Schiefelbein Gable 311

**Lot 70**

3 Embryos  
By Schiefelbein Gable 311

**Lot 71**

3 Embryos  
By Schiefelbein Gable 311

**Lot 72**

3 Embryos  
By Schiefelbein Gable 311



**Schiefelbein Gable 311**  
Sire of Embryos

SITZ RESILENT 10208  
**SCHIEFELBEIN GABLE 311**  
FROSTY ELBA LIZZY 5569  
HOOVER NO DOUBT  
**PEAK DOT PRIDE 13F**  
PEAK DOT PRIDE 7D



BW	WW	YW	MILK	CW	MARB	REA	SC
1.7	86	153	22	66	0.81	0.83	358

A top ranking donor female from Peak Dot Ranch that recently sold for \$25,000 to Chapman Angus Oklahoma in the Autumn Angus Classic. Peak Dot Pride 13F is genetically and prototypically outstanding female with undeniable maternal presence, pedigree power and cow family strength all wrapped up in one package. She has been a very consistent fertile donor producing 18 embryos on her last two flushes. She is a herd favorite with her impeccable udder quality and model Angus body type. A third generation donor going back to the popular Peak Dot Pride 88B. An Elite/Premier Dam with a nursing ratio of 108 on her last seven calves. She is also the mother of Peak Dot Herdsires Peak Dot Lancaster and Peak Dot Seedstock 38F.

**Embryos stored at BoviGen - Moose Jaw SK**  
**Embryos are qualified for Canada & USA**



# PEAK DOT ERICA 358D



**Lot 73**

3 Embryos  
By Schiefelbein Gable 311

**Lot 74**

4 Embryos  
By Schiefelbein Gable 311



**Schiefelbein Gable 311**  
Sire of Embryos

SITZ RESILENT 10208  
**SCHIEFELBEIN GABLE 311**  
FROSTY ELBA LIZZY 5569  
VISION UNANIMOUS 1418  
**PEAK DOT ERICA 358D**  
ERICA OF PEAK DOT 896Y



Peak Dot Erica 358D is a female you can build around with confidence. Like many of the Vision Unanimous daughters she is a stout made, deep bodied female with a great udder. Her dam has raised several featured top selling bulls and represents maternal, production, fertility and longevity.

**Embryos stored at BoviGen - Moose Jaw SK**  
**Embryos are qualified for Canada & USA**

BW	WW	YW	MILK	CW	MARB	REA	SC
1.6	79	138	21	51	0.59	0.59	325



# PEAK DOT LADY 51E

## Lot 75

3 Embryos  
By Schiefelbein Gable 311

## Lot 76

3 Embryos  
By Schiefelbein Gable 311

## Lot 77

3 Embryos  
By Schiefelbein Gable 311

## Lot 78

2 Embryos  
By Schiefelbein Gable 311



**Schiefelbein Gable 311**  
**Sire of Embryos**

SITZ RESILENT 10208  
**SCHIEFELBEIN GABLE 311**  
FROSTY ELBA LIZZY 5569  
PEAK DOT FOOTHILLS 1012B  
**PEAK DOT LADY 51E**  
PEAK DOT LADY 76B



BW	WW	YW	MILK	CW	MARB	REA	SC
1.2	86	146	26	61	0.44	0.76	334

Peak Dot Lady 51E is a model Angus female with a little extra look, loads of body depth and excellent production and fertility. She is one of two direct daughters of the Genex sire Peak Dot Foothills 1012B that we decided to flush this year. Peak Dot Lady 51E is an Elite/Premier Dam with the CAA and has an average weaning ratio of 109 on her last five calves. She is also the dam of the \$30,000 Peak Dot Four Leaf 157L purchased by Six Mile Ranch. She has a bull calf by Profound that will be a feature in the 2025 Peak Dot Spring Bull Sale. This mating planned mating to Gable will be sure to result in some progeny with ideal body type and that striking look.

**Embryos stored at BoviGen - Moose Jaw SK**  
**Embryos are qualified for Canada & USA**



# PEAK DOT BARBARA 67E

**Lot 79**

3 Embryos  
By Schiefelbein Gable 311

**Lot 80**

3 Embryos  
By Schiefelbein Gable 311

**Lot 81**

3 Embryos  
By Schiefelbein Gable 311

**Lot 82**

4 Embryos  
By Schiefelbein Gable 311



**Schiefelbein Gable 311**  
Sire of Embryos

SITZ RESILIENT 10208  
**SCHIEFELBEIN GABLE 311**  
FROSTY ELBA LIZZY 5569  
VISION UNANIMOUS 1418  
**PEAK DOT BARBARA 67E**  
BARBARA OF PEAK DOT 266W



Peak Dot Barbara 67E is a second generation donor that always has done a good job on her calves no matter who she is mated to. She is extremely good footed with plenty of body depth, fleshing ability and has a true authentic Angus look. The demand for Gable is at an all-time high and this mating will result in progeny with tones of body, explosive muscle shape in a very sound structural package.

**Embryos stored at BoviGen - Moose Jaw SK**  
**Embryos are qualified for Canada & USA & Australia**

BW	WW	YW	MILK	CW	MARB	REA	SC
1.5	71	123	21	46	0.56	0.48	312



# PEAK DOT JESSICA 426G



**Lot 83**

3 Embryos  
By Schiefelbein Gable 311

**Lot 84**

3 Embryos  
By Schiefelbein Gable 311



**Schiefelbein Gable 311**  
Sire of Embryos

SITZ RESILIENT 10208  
**SCHIEFELBEIN GABLE 311**  
FROSTY ELBA LIZZY 5569  
JANSSEN EARNHARDT 5003  
**PEAK DOT JESSICA 426G**  
PEAK DOT JESSICA 23D



An opportunity to access genetics from one of our favorite cows on the ranch. Peak Dot Jessica 426G is a super powerful cow with a balanced genetic and visual package that excels in udder quality and milk production and maternal quality. She offers a proven pedigree resulting in progeny with bred in consistency and predictability. She has raised the kind that grow and gain and her mating to the popular Gable will result in some high end progeny that will perform and excel in any program.

**Embryos stored at BoviGen - Moose Jaw SK**  
**Embryos are qualified for Canada & USA & Australia**

BW	WW	YW	MILK	CW	MARB	REA	SC
3.0	81	143	20	57	0.50	0.63	311



# PEAK DOT LADY 2044H

*Lot 85*

4 Embryos  
By Schiefelbein Gable 311



**Schiefelbein Gable 311**  
Sire of Embryos

SITZ RESILIENT 10208  
**SCHIEFELBEIN GABLE 311**  
FROSTY ELBA LIZZY 5569  
MUSGRAVE 316 COLOSSAL 137  
**PEAK DOT LADY 2044H**  
PEAK DOT LADY 2067D



Peak Dot Lady 2044H has been a favorite ever since she was a calf. She has grown into a long bodied, deep sided cow with a beautiful udder, massive hip and a great look. Her Big River bull calf was a feature in our 2023 Spring Bull Sale and we retained a excellent Brutus daughter out of her this year. The maternal side of this cow is stacked with generations of great females stemming back to Lady of Peak Dot 402U. A popular donor with 64 progeny. This is a great mating here and it will leave some highly productive females.

**Embryos stored at BoviGen - Moose Jaw SK**  
**Embryos are qualified for Canada & USA & Australia**

BW	WW	YW	MILK	CW	MARB	REA	SC
0.9	81	135	22	47	0.44	0.52	356



# PEAK DOT ERICA 40E

**Lot 86**

5 Embryos  
By Schiefelbein Gable 311



**Schiefelbein Gable 311**  
Sire of Embryos

SITZ RESILIENT 10208  
**SCHIEFELBEIN GABLE 311**  
FROSTY ELBA LIZZY 5569  
VISION UNANIMOUS 1418  
**PEAK DOT ERICA 40E**  
ERICA OF PEAK DOT 478U



BW	WW	YW	MILK	CW	MARB	REA	SC
2.3	80	140	20	52	0.54	0.54	303

Peak Dot Erica 40E is a second generation donor and direct daughter from our all time high income producing cow on the ranch Erica of Peak Dot 478U. She currently has 54 progeny and is the dam or grandam of several noted sires such as Alta sires Peak Dot Prime and Peak Dot Country and top sellers Peak Dot Attractive 186F and Peak Dot Boost 137H. Peak Dot Erica 40E was chosen to continue on the Erica Legacy. She is a proven producer with great feet, an exceptional udder and that soft easy fleshing body type that we like to replicate over and over. Her mating to the popular Gable should result in progeny that are easy to look at and even easier to sell!

**Embryos stored at BoviGen - Moose Jaw SK**  
**Embryos are qualified for Canada & USA**



# Ponderosa

# *Embryos*

Lots 87 - 95





# PEAK DOT BARBARA 807H

*Lot 87*

2 Embryos  
By Schiefelbein Ponderosa



**Schiefelbein Ponderosa**  
Sire of Embryos

CONNELLY BIG VALLEY  
**SCHIEFELBEIN PONDEROSA 1122**  
FROSTY ELBA LIZZY 480  
ELLINGSON PROFOUND 8155  
**PEAK DOT BARBARA 807H**  
PEAK DOT BARBARA 483A



Peak Dot Barbara 807H is a model female from our program. Perfect udder, perfect feet, long level hip, wide based and very sound structured. Her dam Peak Dot Barbara 483A is a proven donor with 35 progeny. We have an extremely nice set of daughters at Peak Dot and her sons have been topping our bull sales. We think the world of this mating to the valuable Ponderosa and would expect to see sons with an abundance of muscle, body shape and depth of rib and daughters that are easy fleshing, deep ribbed with beautiful udders.

**Embryos stored at BoviGen - Moose Jaw SK**  
**Embryos are qualified for Canada**

BW	WW	YW	MILK	CW	MARB	REA	SC
2.8	82	137	25	60	0.74	0.45	345



# PEAK DOT PANSY 876G

**Lot 88**

3 Embryos  
By Schiefelbein Ponderosa

**Lot 89**

3 Embryos  
By Schiefelbein Ponderosa

**Lot 90**

4 Embryos  
By Schiefelbein Ponderosa



**Schiefelbein Ponderosa**  
Sire of Embryos

CONNELLY BIG VALLEY  
**SCHIEFELBIEN PONDEROSA 1122**  
FROSTY ELBA LIZZY 480  
ELLINGSON RIDER PRIDE 7282  
**PEAK DOT PANSY 876G**  
PEAK DOT PANSY 68B



Peak Dot Pansy 876G is a top ranking donor with impressive phenotype and an excellent EPD profile. She is a second generation donor. Her dam is listed as Elite/Premier Dam with the CAA. We have three full sisters and several maternal sisters to Peak Dot Pansy 876G in the herd. They all have the same exceptional udders. She raised one of the very top Gable bulls in the 2024 Spring Bull Sale and has a big powerful Big River son that will be featured in our 2025 Spring Sale.

**Embryos stored at BoviGen - Moose Jaw SK**  
**Embryos are qualified for Canada**

BW	WW	YW	MILK	CW	MARB	REA	SC
2.0	79	141	23	63	0.42	0.69	316



# PEAK DOT BARBARA 67E



## Lot 91

3 Embryos  
By Schiefelbein Ponderosa

## Lot 92

3 Embryos  
By Schiefelbein Ponderosa

## Lot 93

3 Embryos  
By Schiefelbein Ponderosa

## Lot 94

3 Embryos  
By Schiefelbein Ponderosa



**Schiefelbein Ponderosa**  
Sire of Embryos

CONNEALY BIG VALLEY  
**SCHIEFELBIEN PONDEROSA 1122**  
FROSTY ELBA LIZZY 480  
VISION UNANIMOUS  
**PEAK DOT LADY 67E**  
BARBARA OF PEAK DOT 266W



Peak Dot Barbara 67E is a second generation donor that always has done a good job on her calves no matter who she is mated to. She is extremely good footed with plenty of body depth, fleshing ability and has a true authentic Angus look. The demand for Ponderosa is at an all-time high and this mating will result in progeny with tones of body, explosive muscle shape in a very sound structural package.

**Embryos stored at BoviGen - Moose Jaw SK**  
**Embryos are qualified for Canada**

BW	WW	YW	MILK	CW	MARB	REA	SC
2.0	66	118	24	49	0.52	0.46	292



# PEAK DOT BAMBI 78G



*Lot 95*

1 Embryo  
By Schiefelbein Ponderosa



**Schiefelbein Ponderosa**  
Sire of Embryos

CONNEALY BIG VALLEY  
**SCHIEFELBIEN PONDEROSA 1122**  
FROSTY ELBA LIZZY 480  
ELLINGSON ROUGHRIDER 4202  
**PEAK DOT BAMBI 78G**  
PEAK DOT BAMBI 16C



Peak Dot Bambi 78G is a second generation embryo donor from the highly fertile Bambi cow family. Her dam Peak Dot Bambi 16C is listed as an Elite/Premier dam with the Canadian Angus Association and has an average weaning ratio of 110 on her last six calves. She is the dam of Peak Dot Franchise 389F owned by Perrot Cattle Co. and Canadian Sires. Peak Dot Bambi 78G has just weaned off her 3rd consecutive outstanding calf and bred back early again, she is well on her way to making Elite Dam status herself. The Ellingson Roughrider daughters are highly thought after for their productive easy fleshing, deep sided type and ideal udder quality. Bambi 78G along with several of her maternal sisters have been retained in the Peak Dot herd as we continue to build and add to this highly productive maternally driven cow family. This planned mating to Ponderosa should result in some extremely stout progeny that are some of the freshest genetics from our program.

**Embryos stored at BoviGen - Moose Jaw SK**  
**Embryos are qualified for Canada**

BW	WW	YW	MILK	CW	MARB	REA	SC
0.8	65	118	28	49	0.57	0.47	315



# Rectify

*Embryos* Lots 96 - 102





# PEAK DOT BARBARA 807H



**Lot 96**

3 Embryos  
By Raven Rectify

**Lot 97**

3 Embryos  
By Raven Rectify

**Lot 98**

3 Embryos  
By Raven Rectify



**Raven Rectify  
Sire of Embryos**

SITZ STELLAR 726D  
**RAVEN RECTIFY J156**  
 RAVEN BLACKBIRD H403  
 ELLINGSON PROFOUND 8155  
**PEAK DOT BARBARA 807H**  
 PEAK DOT BARBARA 483A



Peak Dot Barbara 807H is a model female from our program. Perfect udder, perfect feet, long level hip, wide based and very sound structured. Her dam Peak Dot Barbara 483A is a proven donor with 35 progeny. We have an extremely nice set of daughters at Peak Dot and her sons have been topping our bull sales. We think the world of this mating to Rectify and would expect to see sons with an abundance of muscle, body shape and depth of rib and daughters that are easy fleshing, deep ribbed with beautiful udders.

**Embryos stored at BoviGen - Moose Jaw SK**  
**Embryos are qualified for Canada**

BW	WW	YW	MILK	CW	MARB	REA	SC
2.3	81	133	21	50	0.84	0.31	319



# PEAK DOT BARBARA 67E

**Lot 99**

3 Embryos  
By Raven Rectify

**Lot 100**

3 Embryos  
By Raven Rectify

**Lot 101**

3 Embryos  
By Raven Rectify

**Lot 102**

4 Embryos  
By Raven Rectify



**Raven Rectify**  
Sire of Embryos

SITZ STELLAR 726D  
RAVEN RECTIFY J156  
RAVEN BLACKBIRD H403  
VISION UNANIMOUS  
PEAK DOT LADY 67E  
BARBARA OF PEAK DOT 266W



Peak Dot Barbara 67E is a second generation donor that always has done a good job on her calves no matter who she is mated to. She is extremely good footed with plenty of body depth, fleshing ability and has a true authentic Angus look. The demand for Rectify is at an all-time high and this mating will result in progeny with tones of body, explosive muscle shape in a very sound structural package.

**Embryos stored at BoviGen - Moose Jaw SK**  
**Embryos are qualified for Canada**

BW	WW	YW	MILK	CW	MARB	REA	SC
1.6	65	114	23	42	0.62	0.32	266



# Gatsby *Embryos* Lots 103 - 104





# PEAK DOT PRIDE 13F



**Lot 103**

3 Embryos  
By Peak Dot Gatsby

**Lot 104**

4 Embryos  
By Peak Dot Gatsby



**Peak Dot Gatsby**  
Sire of Embryos

SCHIEFELBIEN GABLE 311  
**PEAK DOT GATSBY 135L**  
PEAK DOT ROSILLA 117E  
HOOVER NO DOUBT  
**PEAK DOT PRIDE 13F**  
PEAK DOT PRIDE 7D



BW	WW	YW	MILK	CW	MARB	REA	SC
2.7	81	145	24	63	0.71	0.62	327

A top ranking donor female from Peak Dot Ranch that recently sold for \$25,000 to Chapman Angus Oklahoma in the Autumn Angus Classic. Peak Dot Pride 13F is genetically and prototypically outstanding female with undeniable maternal presence, pedigree power and cow family strength all wrapped up in one package. She has been a very consistent fertile donor producing 18 embryos on her last two flushes. She is a herd favorite with her impeccable udder quality and model Angus body type. A third generation donor going back to the popular Peak Dot Pride 88B. An Elite/Premier Dam with a nursing ratio of 108 on her last seven calves. She is also the mother of Peak Dot Herdsires Peak Dot Lancaster and Peak Dot Seedstock 38F.

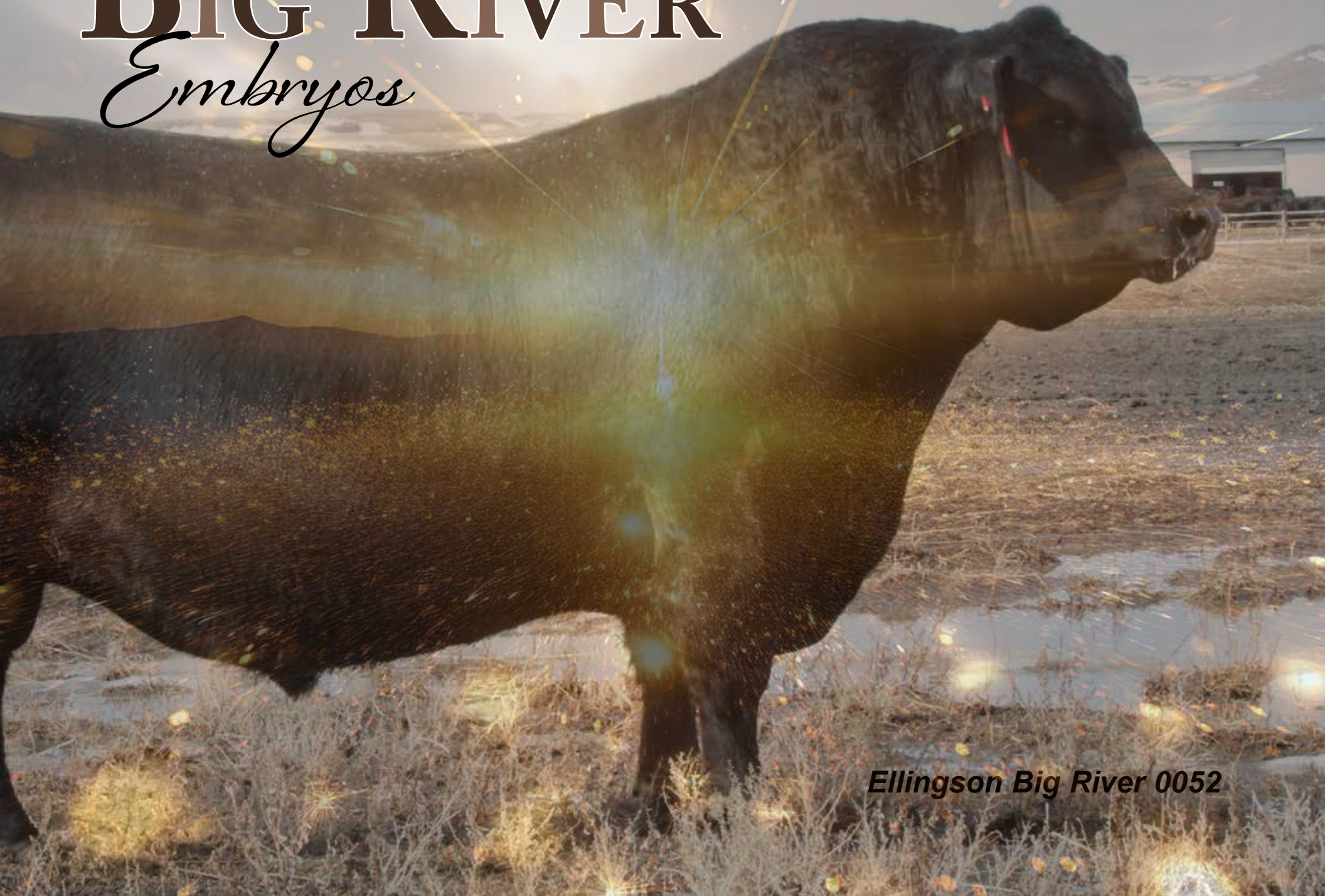
**Embryos stored at BoviGen - Moose Jaw SK**  
**Embryos are qualified for Canada**



# BIG RIVER

*Embryos*

Lots 105 - 111



*Ellingson Big River 0052*



# PEAK DOT BARBARA 807H



**Lot 105**

3 Embryos  
By Ellingson Big River

**Lot 106**

3 Embryos  
By Ellingson Big River

**Lot 107**

3 Embryos  
By Ellingson Big River

**Lot 108**

3 Embryos  
By Ellingson Big River



**Ellingson Big River 0052**  
Sire of Embryos

ELLINGSON THREE RIVERS 8062  
**ELLINGSON BIG RIVER 0052**  
EA BLACKCAP 4053  
ELLINGSON PROFOUND 8155  
**PEAK DOT BARBARA 807H**  
PEAK DOT BARBARA 483A



Peak Dot Barbara 807H is a model female from our program. Perfect udder, perfect feet, long level hip, wide based and very sound structured. Her dam Peak Dot Barbara 483A is a proven donor with 35 progeny. We have an extremely nice set of daughters at Peak Dot and her sons have been topping our bull sales. We think the world of this mating to Ellingson Big River and would expect to see sons with an abundance of muscle, body shape and depth of rib and daughters that are easy fleshing, deep ribbed with beautiful udders.

**Embryos stored at BoviGen - Moose Jaw SK**  
**Embryos are qualified for Canada & USA & Australia**

BW	WW	YW	MILK	CW	MARB	REA	SC
4.0	79	130	22	48	0.77	0.33	323



# PEAK DOT BAMBI 78G

## Lot 109

3 Embryos  
By Ellingson Big River

## Lot 110

3 Embryos  
By Ellingson Big River

## Lot 111

4 Embryos  
By Ellingson Big River



**Ellingson Big River 0052**  
Sire of Embryos

ELLINGSON THREE RIVERS 8062  
**ELLINGSON BIG RIVER 0052**  
EA BLACKCAP 4053  
ELLINGSON ROUGHRIDER 4202  
**PEAK DOT BAMBI 78G**  
PEAK DOT BAMBI 16C



BW	WW	YW	MILK	CW	MARB	REA	SC
2.0	62	111	25	40	0.61	0.35	293

Peak Dot Bambi 78G is a second generation embryo donor from the highly fertile Bambi cow family. Her dam Peak Dot Bambi 16C is listed as an Elite/Premier dam with the Canadian Angus Association and has an average weaning ratio of 110 on her last six calves. She is the dam of Peak Dot Franchise 389F owned by Perrot Cattle Co. and Canadian Sires. Peak Dot Bambi 78G has just weaned off her 3rd consecutive outstanding calf and bred back early again, she is well on her way to making Elite Dam status herself. The Ellingson Roughrider daughters are highly thought after for their productive easy fleshing, deep sided type and ideal udder quality. Bambi 78G along with several of her maternal sisters have been retained in the Peak Dot herd as we continue to build and add to this highly productive maternally driven cow family. This planned mating to Big River should result in some extremely stout progeny that are some of the freshest genetics from our program.

**Embryos stored at BoviGen - Moose Jaw SK**  
**Embryos are qualified for Canada & USA**



# LADY OF PEAK DOT 986U



**Lot 112**

3 Embryos  
By Dameron First Class

**Lot 113**

3 Embryos  
By Dameron First Class

**Lot 114**

3 Embryos  
By Dameron First Class

**Lot 115**

3 Embryos  
By Dameron First Class

**Lot 116**

3 Embryos  
By Dameron First Class



**Dameron First Class**  
Sire of Embryos

EXG RS FIRST RATE S903 R3  
**DAMERON FIRST CLASS**  
DAMERON NORTHERN MISS 3114  
SAV 004 PREDOMINANT 4438  
**LADY OF PEAK DOT 986U**  
LADY OF PEAK DOT 782L



Lady of Peak Dot 986U is very well proven second generation donor. She was one of the best daughters of SAV 004 Predominant 4438 that was ever bred. She was a featured donor at Peak Dot with 11 progeny before selling to Daryl Chapman from Oklahoma as the top selling female of that years sale. Her dam Lady of Peak Dot 782L was one of the most influential donor cows in Peak Dot's history with 68 progeny. The legendary Dameron First Class has been the most influential show sire in recent history in the Angus breed. Semen is extremely rare. This very cool mating to Dameron First Class will result in progeny with that extra look and show type presence. I would expect some very well made fancy females out of this mating.

**Embryos stored at Trans Ova - Sioux Center, IA**  
**Embryos are qualified for USA**

BW	WW	YW	MILK	CW	MARB	REA	SC
4.7	55	89	16	28	0.38	0.23	196



# HF *Hi-Country 7L*



*Lot 117*

5 straws Semen  
HF Hi-Country 7L

*Lot 118*

5 straws Semen  
HF Hi-Country 7L



ELLINGSON RANGELAND  
**ELLINGSON HI-RANGE**  
EA EMBLYNETTE 9473  
SCHIEFELBEIN SHOWMAN 338  
**HF TIBBIE 21J**  
HF TIBBIE 215B



BW	WW	YW	MILK	CW	MARB	REA	SC
-1.1	82	141	34	67	0.36	1.30	319

It's been a significant amount of time since we've seen or heard of a bull like Hi Country 7L come into the Angus scene. Hi-Country is big crested, long bodied, wide based, stands on perfect feet and has that ultimate herdbull presence. All the numbers are in the right place. Top 1% for Weaning Weight, Yearling Weight, Scrotal, Hoof Angle, REA and Milk EPDs. Hi-Country offers a negative BW with loads of performance and is heifer approved. He posted a large 40 CM scrotal and 1600 lb March sale day weight. Incredible mother and impeccable udder with Hi-Country being her first effort. These are just some of the reasons he commanded a \$185,000 sale price. If embryo transfer is in your future or breeding your very top cow, we urge you to consider Hi Country.

Owned by: Strongbow Farms, Peak Dot Ranch, River Valley Cattle Co, and Hamilton Farms.

**Semen stored at BoviGen - Moose Jaw SK**  
**Semen qualified for Canada**



# Peak Dot **Gatsby 135L**

**Lot 119**

5 straws Semen  
Peak Dot Gatsby 135L

**Lot 120**

5 straws Semen  
Peak Dot Gatsby 135L



SITZ RESILIENT 10208  
**SCHIEFELBEIN GABLE 311**  
FROSTY ELBA LIZZY 5569  
SAV SEEDSTOCK 4838  
**PEAK DOT ROSILLA 117E**  
PEAK DOT ROSILLA 377C



BW	WW	YW	MILK	CW	MARB	REA	SC
2.4	85	149	30	55	0.43	0.42	344

Offering an opportunity to purchase semen on the "Great Gatsby" the \$70,000 1/2 interest son of the very popular Gable. (Gable the #1 semen seller in the USA at Sire Buyer). Gatsby just keeps getting better and better every time we see him. His muscle, capacity, center body mass and natural fleshing ability have put him in a class of his own. He has the look of a real cow maker and will sire deep bodied females with quality udders, added softness, style and maternal presence. Gatsby comes with a stacked pedigree and performance numbers that run up the charts ranking in the very top 1% of the breed for weaning weight and yearling weight EPDs. He also ranks right near the top for heifer pregnancy rate, milk, hoof claw and docility EPDs. All very important traits. Gatsby was just 80lbs at birth and went on to wean off this fall at 806lbs to earn a weaning ratio of 105. His SAV Seedstock dam is a model Angus cow with ideal body type and unmistakable maternal presence. With no semen available in Canada on Gable. This Gatsby semen would be an excellent investment, ideal for any conventional or IVF flushing programs.

Owned by: Everblack Angus, Harprey farms, and Peak Dot Ranch.

**Semen stored at BoviGen - Moose Jaw SK**

**Semen qualified for Canada**



# Schiefelbein **Ponderosa**

**Lot 121**

5 straws Semen  
Schiefelbein Ponderosa

CONNELLY DRY VALLEY  
**CONNELLY BIG VALLEY**  
BUNTY LAY OF CONANGA 4930  
MOGCK ENTICE  
**FROSTY ELBA LIZZY 480**  
FROSTY ELBA LIZZY 1268



BW	WW	YW	MILK	CW	MARB	REA	SC
1.5	87	155	31	67	0.54	0.80	366

Ponderosa the bull that is on the radar of the Angus World and already has begun to write his own chapter in Angus History. He started as the popular high selling bull out of the 2023 Schiefelbein Farms Bull Sale where he was regarded as the thickest Angus Bull in existence. He went on to set new records every time his semen was offered at public auction and the demand and momentum continued on with Ponderosa embryos selling for \$3750 per embryo in past sales. Never before has there been a time or a push in History to get back to good functional, deep-bodied, correct cattle. Ponderosa is leading the charge with his mass, performance and fleshing ability while adding style and balance. If you are looking for that special bull to breed your best donors to or if you have a pen of outstanding replacement heifers to breed, consider Ponderosa as he will add not only quality but also add real value to every future mating.

**Semen stored at BoviGen - Moose Jaw SK**  
**Semen qualified for Canada**





# Raven Rectify

**Lot 122**

5 straws Semen  
Raven Rectify

**Lot 123**

5 straws Semen  
Raven Rectify

**Lot 124**

5 straws Semen  
Raven Rectify

**Lot 125**

5 straws Semen  
Raven Rectify



**RAVEN RECTIFY**

MOHNEN SUBSTANTIAL 272  
SITZ STELLAR 726D  
SITZ PRIDE 200B  
WOODHILL RELEVANCE  
RAVEN BLACKBIRD H403  
RAVEN BLACKBIRD 162



Rectify is an exciting new herdsire at Peak Dot Ranch, he offers calving-ease and performance with outstanding maternal pedigree and bred in longevity. Rectify is a thick topped, deep sided, soft made, good headed and comes with great feet and excellent scrotal that the Sitz Stellar sons are known for. He weaned off at 845lbs and holds a \$ Weaning index in the top 3% of the breed. His dam is prototypically outstanding and was the pick of the 2021 Raven Angus herd selling to Simon Cattle Co. His productive grandam is 11 years old and looks like she will live and produce for another 11 years. His great grandam is a 13 year old Pathfinder at Raven Angus.

**Semen stored at BoviGen - Moose Jaw SK**  
**Semen qualified for Canada**

BW	WW	YW	MILK	CW	MARB	REA	SC
0.6	85	147	23	48	0.74	0.51	314



# Peak Dot **Boost 162K**



## **Lot 126**

5 straws Semen  
Peak Dot Boost 162K

## **Lot 127**

5 straws Semen  
Peak Dot Boost 162K

## **Lot 128**

5 straws Semen  
Peak Dot Boost 162K

## **Lot 129**

5 straws Semen  
Peak Dot Boost 162K

## **Lot 130**

5 straws Semen  
Peak Dot Boost 162K

## **Lot 131**

5 straws Semen  
Peak Dot Boost 162K

MUSGRAVE 316 COLOSSAL 137  
**PEAK DOT BOOST 137H**  
PEAK DOT ERICA 738B  
HOOVER NO DOUBT  
**PEAK DOT DUCHESS 27H**  
DUCHESS OF PEAK DOT 155Y



Peak Dot Boost 162K was the \$80,000 top selling bull from our 2023 Spring Sale to Eaglehawk Angus Australia. Boost 162K is a low birth weight bull that will also add some real pounds to your calf crop and dollars to your bottom line. You will love the look of this bull. He displays real muscle, capacity, softness and substance with powerful phenotype. He weaned off at 911lbs to earn a weaning ratio of 114. He is off a great looking No Doubt daughter with a nice udder and his grandam earned Elite Dam status with the Canadian Angus Association. Peak Dot Boost 162K comes with a ton of performance packed into a moderate frame.

**Semen stored at Alta Genetics, AB**  
**Semen qualified for Canada & USA & Mexico & Australia**

BW	WW	YW	MILK	CW	MARB	REA	SC
4.6	80	144	20	65	0.60	0.99	314



# Peak Dot **Belfast 2099H**



## **Lot 132**

5 straws Semen  
Peak Dot Belfast 2099H

## **Lot 133**

5 straws Semen  
Peak Dot Belfast 2099H

## **Lot 134**

5 straws Semen  
Peak Dot Belfast 2099H

## **Lot 135**

5 straws Semen  
Peak Dot Belfast 2099H

## **Lot 136**

5 straws Semen  
Peak Dot Belfast 2099H

## **Lot 137**

5 straws Semen  
Peak Dot Belfast 2099H

LD CAPITALIST 028  
**MUSGRAVE 316 COLOSSAL 137**  
MUSGRAVE LADY BARBARA 545  
4M ELEMENT 405  
**PEAK DOT ANNIE K 2145E**  
ANNIE K OF PEAK DOT 1016X



This power bull has peaked several peoples interest that seen him and his calves. His name is Peak Dot Belfast 2099H. He is a Colossal son that offers calving-ease with more frame and performance. His easy fleshing, fertile Element dam has an excellent udder and very good feet. His sons lead off the 2024 Spring Sale Book and certainly were a well recieved feature sire group and his daughters are among some of our favorites in the replacement pen.

**Semen stored at BoviGen - Moose Jaw SK**  
**Semen qualified for Canada**

BW	WW	YW	MILK	CW	MARB	REA	SC
2.0	81	139	13	54	0.48	0.51	288



# Peak Dot **Boost 137H**



## **Lot 138**

5 straws Semen  
Peak Dot Boost 137H

## **Lot 139**

5 straws Semen  
Peak Dot Boost 137H

## **Lot 140**

5 straws Semen  
Peak Dot Boost 137H

## **Lot 141**

5 straws Semen  
Peak Dot Boost 137H

## **Lot 142**

5 straws Semen  
Peak Dot Boost 137H

## **Lot 143**

5 straws Semen  
Peak Dot Boost 137H

LD CAPITALIST 028  
**MUSGRAVE 316 COLOSSAL 137**  
MUSGRAVE LADY BARBARA 545  
VISION UNANIMOUS 1418  
**PEAK DOT ERICA 738B**  
ERICA OF PEAK DOT 478U



### **Calving Ease with Performance**

Incredible mass, volume, length and stoutness with abundant depth, thickness and excellent scrotal development. This bull is something special. He has a birth weight of 68lbs then went on to wean off at 934lbs and weighed just under 1700lbs at a year of age! He earned a weaning ratio of 124 and ranks in the very top 1% for weaning weight and yearling weight EPDs, top 10% for REA and top 3% for CED. His grandam Erica of Peak Dot 478U is the most influential cow at Peak Dot with 54 progeny. Boost was purchased by Semex Beef. Unfortunately Boost had an untimely death before all his health test were completed for exportable semen leaving a limited amount of semen and it is Canadian qualified only.

**Semen stored at Bow Valley Genetics, AB**  
**Semen qualified for Canada**

BW	WW	YW	MILK	CW	MARB	REA	SC
0.9	71	129	24	57	0.55	0.66	317



# Peak Dot *Newfound 83H*

*Lot 144*

5 straws Semen  
Peak Dot Newfound 83H

*Lot 145*

5 straws Semen  
Peak Dot Newfound 83H

*Lot 146*

5 straws Semen  
Peak Dot Newfound 83H

*Lot 147*

5 straws Semen  
Peak Dot Newfound 83H

*Lot 148*

5 straws Semen  
Peak Dot Newfound 83H

*Lot 149*

5 straws Semen  
Peak Dot Newfound 83H

S POWERPOINT WS 5503  
ELLINGSON PROFOUND 8155  
EA ROSETTA 6157  
VISION UNANIMOUS 1418  
PEAK DOT MIA 247C  
MIA OF PEAK DOT 316Y



BW	WW	YW	MILK	CW	MARB	REA	SC
3.1	76	123	13	55	0.64	0.49	340

The popular lot 1 \$35,000 top selling bull Profound son in the 2021 Peak Dot Ranch Bull Sale. Newfound may be the most balanced individual ever raised at Peak Dot Ranch. He replicates the same unmistakable herdbull presence that his sire does. His eye catching phenotype and excellent feet have been appreciated by even the most astute cattle visitors. He weaned off just under 900lbs for a weaning ratio 117. His EPDs rank him in the top 1% for weaning weight, top 3% for yearling weight, and top 20% for marbling. His dam sired by Unanimous is as impressive as you will find. She has been successfully mated and flushed many times to some of the top bulls in the breed always freezing several quality embryos per flush.

**Semen stored at BoviGen - Moose Jaw SK**  
**Semen qualified for Canada**



# Ellingson **Big River**



## **Lot 150**

5 straws Semen  
Ellingson Big River

## **Lot 151**

5 straws Semen  
Ellingson Big River

## **Lot 152**

5 straws Semen  
Ellingson Big River

## **Lot 153**

5 straws Semen  
Ellingson Big River

## **Lot 154**

5 straws Semen  
Ellingson Big River

## **Lot 155**

5 straws Semen  
Ellingson Big River

ELLINGSON HOMESTEAD 6030  
**ELLINGSON THREE RIVERS 8062**  
EA EMBLYNETTE 6279  
KOU PAL ADVANCE 28  
**EA BLACKCAP 4053**  
EA BLACKCAP 7915



BW	WW	YW	MILK	CW	MARB	REA	SC
4.0	82	146	24	44	0.61	0.55	322

Big River progeny are well made with lots of size, body shape, hair and bone and as much sheer thickness as any sire we have ever used. His daughters are among the very best in the replacement pen and his sons were among the top selling bulls in our last two sales. Ellingson Big River is the next big important piece in our breeding program here at Peak Dot as we continue to improve overall maternal, foot and udder quality, fertility and milking ability. His muscle density, base width and bone circumference and performance is unmatched. He checks all the boxes starting with **BIG PERFORMANCE:** A moderate 86lbs birth weight combined with a 1006lbs weaning weight and a 1674lbs yearling weight. **BIG MATERNAL:** His dam EA Blackcap 4053 is one of the best donor females on the Ellingson Angus Ranch and has earned Pathfinder status with a production record birth ratio of 5/97, a nursing ratio of 5/107 and a yearling ratio of 3/102. **BIG FERTILITY:** 42cm scrotal at a year and has put up a large volume of quality semen. **BIG POWER:** Explosive body capacity, ample bone, structural soundness and fluent mobility. Top 1% for hoof claw and angle EPDs. Top 1% for weaning and Yearling EPDs.

**Semen stored at BoviGen - Moose Jaw SK**  
**Semen qualified for Canada**



# Peak Dot *Mosaic*

## *Lot 156*

5 straws Semen  
Peak Dot Mosaic

## *Lot 157*

5 straws Semen  
Peak Dot Mosaic

## *Lot 158*

5 straws Semen  
Peak Dot Mosaic

## *Lot 159*

5 straws Semen  
Peak Dot Mosaic

## *Lot 160*

5 straws Semen  
Peak Dot Mosaic

## *Lot 161*

5 straws Semen  
Peak Dot Mosaic

CONNEALY EARNAN 076E  
ELLINGSON ROUGHRIDER 4202  
EA BLACKLASS 8914  
BUSH EASY DECISION 98  
**PEAK DOT LADY 38C**  
PEAK DOT LADY 626A



Peak Dot Mosaic was the \$60,000 sale feature from the 2020 Peak Dot Ranch Spring bull sale selling to SSS Cattle Co. He offers extra natural width and depth of body in a structurally sound package. He is backed by some of the best cows on the ranch with two consecutive generations of donors. Mosaic sons posted impressive weaning weights with tremendous depth of body, width and ideal growth curves for real-world cattle producers. His first sons were the top selling lots in the 2022 Spring Peak Dot Ranch Bull Sale! **Semen stored at Bow Valley Genetics, AB**  
**Semen qualified for Canada**

BW	WW	YW	MILK	CW	MARB	REA	SC
2.7	65	120	16	58	0.43	0.94	311



# Peak Dot **Big River 139K**

## **Lot 162**

5 straws Semen  
Peak Dot Big River 139K

## **Lot 163**

5 straws Semen  
Peak Dot Big River 139K

## **Lot 164**

5 straws Semen  
Peak Dot Big River 139K

## **Lot 165**

5 straws Semen  
Peak Dot Big River 139K

## **Lot 166**

5 straws Semen  
Peak Dot Big River 139K

## **Lot 167**

5 straws Semen  
Peak Dot Big River 139K

ELLINGSON THREE RIVERS 8062  
**ELLINGSON BIG RIVER 0052**  
EA BLACKCAP 4053  
4M ELEMENT 405  
**PEAK DOT HEROINE 2007D**  
HEROINE OF PEAK DOT 663X



BW	WW	YW	MILK	CW	MARB	REA	SC
3.4	90	156	21	69	0.48	0.95	326

Peak Dot Big River 139K is absolutely one of the best we have ever raised with incredible phenotype, performance and cow power. This bull was a standout since day one and impressed us every time we put him on the scale. 139K weaned off at 955lbs to earn a weaning ratio 120 and weighed 1406lbs at year with a 104 weaning ratio. His feet are impeccable and are supported by his top ranking hoof EPDs. He is backed by three generations of deep bodied, easy fleshing productive females. His dam has true breed character and possesses all the qualities of an ideal beef cow. Some bulls are worth the drive to see in person. Peak Dot big River 139K has been appreciated by even the most astute cattle visitors. His first calves will be a feature sire group in the 2025 Peak Dot Ranch Spring Bull Sale.

**Semen stored at BoviGen - Moose Jaw SK**  
**Semen qualified for Canada**



# SAV 004 Predominant 4438



**Lot 168**

5 straws Semen  
SAV 004 Predominant 4438

**Lot 169**

5 straws Semen  
SAV 004 Predominant 4438

**Lot 170**

5 straws Semen  
SAV 004 Predominant 4438

**Lot 171**

5 straws Semen  
SAV 004 Predominant 4438

**Lot 172**

5 straws Semen  
SAV 004 Predominant 4438

**Lot 173**

5 straws Semen  
SAV 004 Predominant 4438

SITZ TRAVELER 8180  
**SAV 8180 TRAVELER 004**  
BOYD FOREVER LADY 8003  
SAV 598 BANDO 5175  
**SAV EMBLYNETTE 1182**  
SAV EMBLYNETTE 7319

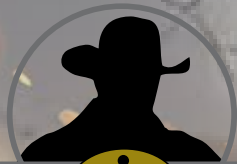


BW	WW	YW	MILK	CW	MARB	REA	SC
2.0	54	90	25	23	0.33	0.20	261

Predominant was one of the most influential herdsires ever purchased by Peak Dot Ranch. For years his sons topped sale after sale at Peak Dot and across the country. Commercial ranchers loved the Predominant sons for there excellent feet, added thickness and volume. We still have customers tell us some of the best bulls and females they ever owned were Predominant sons and daughters. Predominant daughters are beautiful broody females with extra body depth, capacity and excellent udders. Do not miss this chance to purchase this limited semen on one of the best proven herd-sire to ever come out of the SAV program.

**Semen stored at Alta Genetics, AB**  
**Semen qualified for Canada and USA**





*Peak Dot*  *Ranch Ltd.*

Carson Moneo  
306-266-4414

Clay Moneo  
306-266-4411

Email: [peakdot@gmail.com](mailto:peakdot@gmail.com)

TEXT: 306-640-8760

# THANK YOU

Let us know if we can be of assistance

Online with DLMS  
DLMS.CA

# Online Frozen Genetics Sale